

**TORNIER**  
**AEQUALIS™ PERFORM™ +**  
Shoulder System

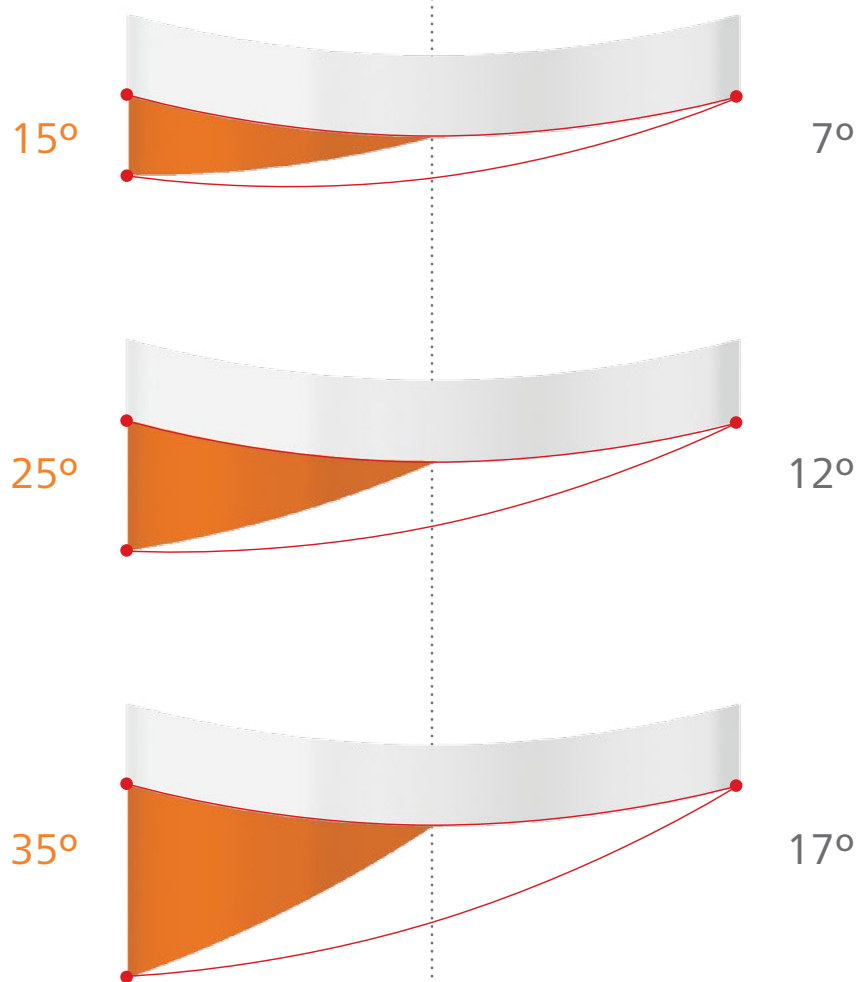
Anatomic Augmented Glenoid - Half Wedge Angle & Version Correction

**Half Wedge Angle**

Measured from mid-line of  
glenoid reamer to posterior rim\*

**Version Correction**

Measured from anterior rim  
to posterior rim of glenoid



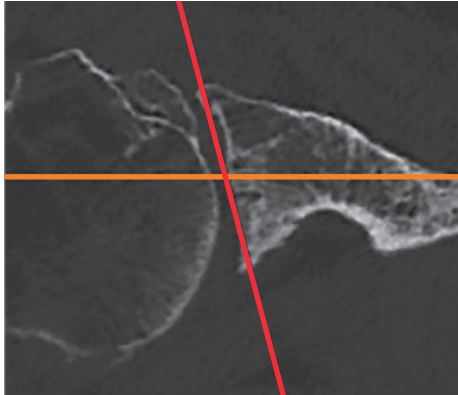
\* The half wedge angles are defined by the location at which the Neo-Reamer pivots.

TORNIER

# AEQUALIS™ PERFORM™ +

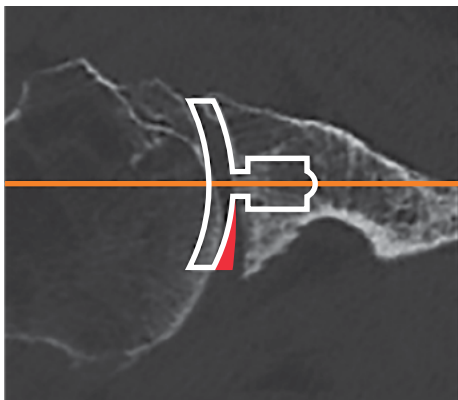
Shoulder System

## Version Correction Example



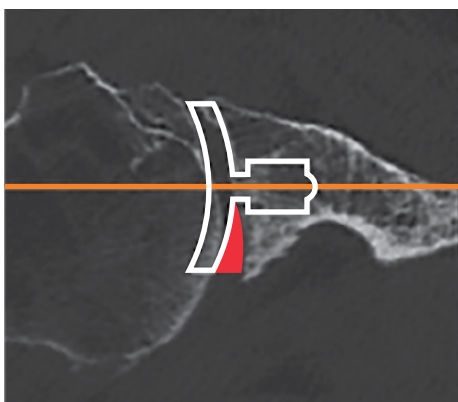
### Case Overview

The Walsh B2 glenoid has a calculated retroversion of 15° from the anterior to posterior rim of the glenoid.



### Version & Seating Assessment with 15° AEQUALIS™ PERFORM™ +

The guide pin (represented by the orange line) is placed to restore version to a neutral position. The 15° implant does not demonstrate full seating as can be seen by the posterior gap. In order to maintain neutral version the next augment (25°) should be evaluated for seating.



### Version & Seating Assessment with 25° AEQUALIS PERFORM+

The move to the 25° implant provides complete seating while maintaining the neutral version demonstrated above. As such, neutral version can be achieved with minimal bone removal.



1023 Cherry Road  
Memphis, TN 38117  
800 238 7117  
901 867 9971  
www.wright.com

10801 Nesbitt Avenue South  
Bloomington, MN 55437  
888 867 6437  
952 426 7600  
www.tornier.com

™ and ® denote Trademarks and Registered Trademarks of Wright Medical Group N.V., or its affiliates. ©2016 Wright Medical Group N.V. or its affiliates. All Rights Reserved.

CAW-4327 REV A ECN 160606 11-May-2016